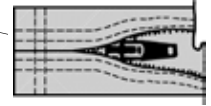
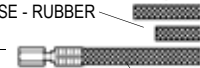


TC-3-10Z 11 FT.  
TC-3-22Z 24 FT.  
3" NYLON CABLE COVER  
WITH ZIPPER CLOSURE  
(See Cable Covers For Options)



45V07R 12.5 FT.  
45V08R 25 FT.  
WATER HOSE - RUBBER

45V09R 12.5 FT.  
45V10R 25 FT.  
GAS HOSE - RUBBER

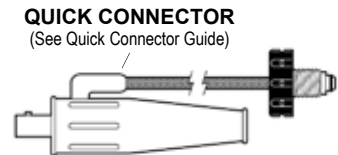
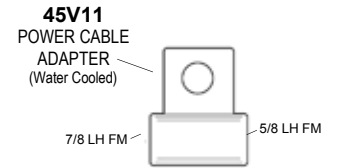
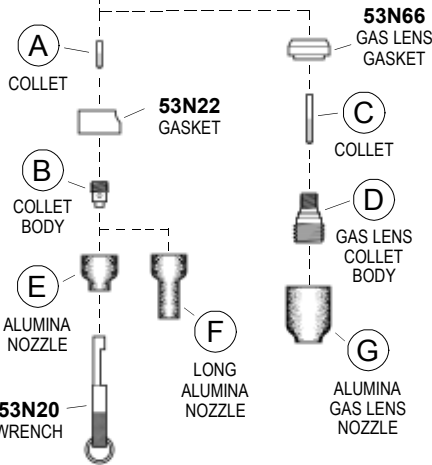
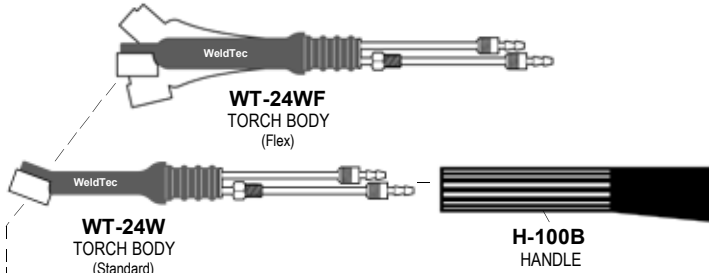


45V03R 12.5 FT.  
45V04R 25 FT.  
POWER CABLE - RUBBER

45V09 12.5 FT.  
45V10 25 FT.  
GAS HOSE - VINYL

45V07 12.5 FT.  
45V08 25 FT.  
WATER HOSE - VINYL

45V03 12.5 FT.  
45V04 25 FT.  
POWER CABLE - VINYL



COPYRIGHT 1994 - 2019 TEC WELDING PRODUCTS, INC.

### COLLETS • COLLET BODIES • GAS LENS

ITEM	ELECTRODE DIAMETER	.040 1,0	1/16 1,6	3/32 2,4
A	COLLET	53N16	53N14	24C332
B	COLLET BODY	53N18	53N19	24CB332
C	GAS LENS COLLET	53N63	53N64	24GLC332
D	GAS LENS	45V42	45V43	45V44

### GAS NOZZLES

ITEM	NO. SIZE	4 1/4"	5 5/16"	6 3/8"	7 7/16"	8 1/2"
E	ALUMINA	53N24A	53N25A	53N27A	—	—
F	LONG 17/8"	53N28A	—	53N26A	—	—
G	ALUMINA GAS LENS	53N58	53N59	53N60	53N61	53N61S

Specifications and descriptions subject to change without notice.